



PERSPECTIVES

Newsletter

Issue 10-04

May 2010

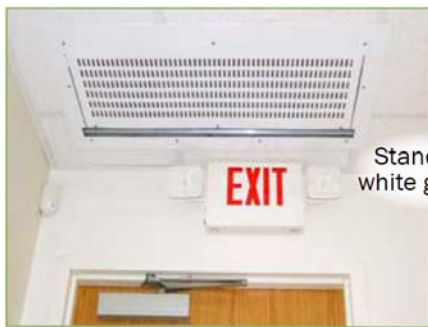
Air Curtains Even an Architect Can Love



“In its simplest application, an air curtain is a continuous broad stream of air circulated across a doorway of a conditioned space. It reduces penetration of insects and unconditioned air into a conditioned space by forcing an airstream over the entire entrance.” Reference: ASHRAE HANDBOOK - 2004 Systems and Equipment

The effectiveness of these devices as a means of environmental separation, insect, dirt, dust and odor control has been documented and has been tried and tested in real life applications. The problem is that they lack aesthetic appeal. The newest addition to the Powered Aire line of air curtains address this issue.

As the name implies, the Chameleon air curtain is deigned to blend in with it's surrounding. Shipped from the factory as a one piece unit, they are installed above the ceiling for a nearly unnoticeable appearance.



Standard white grille*

FEATURES AND BENEFITS

- No nozzle extension or ducting required.
- One piece installation
- For openings up to 14 ft. high, and widths 36-144 inches
- High and low speeds.
- Electric, steam or hot water heat.
- Light Duty model CLD—comes with 1/2 HP motor
- Heavy duty model CHD—comes with 3/4 HP motor
- A variety of control options

Example of Cost Savings

Inside Temperature:	68° F
Hours per day door is in use:	2
Time range that door is open:	9 a.m. to 9 p.m.
Days per week that door is in use:	7
Door height:	8 feet
Door width:	6 feet

Expected Cost Savings for a typical Philadelphia Heating System

\$2,313.00 / Annually

Cost savings calculation was calculated using Powered Aire's "Air Curtain Savings Calculator Program". The program is downloadable at Powered Aire's website or on Powered Aire's electronic catalog. Call us at Elite Air Systems for your copy.



www.PoweredAire.com

57 Ash Circle * Warminster, PA 18974 * Tel: (215) 354-9070 * Fax: (215) 354-9072 * www.EliteAirSys.com



Selection Guide

Door Height	Wind Stopping Capability (MPH)							
	ECP	MP	CED CHS CHD	BCE	BCT	ETD, LDC LDX, THS TIG, TDG	TSD HDC HDX	EHD
4	14.1	15						
5	13.1	13.9						
6	12.3	13.1						
7	11.5	12.2						
8	10.8	11.5	12.8	14.7	16.4	16.4		
9	10.1	10.9	11.9	14	15.5	15.5		
10	9.6	10.2	11	13.2	14.8	14.8	20.4	
11	8.7	9.3	10.1	12.1	13.9	13.9	19.8	
12	8.1	8.6	9.2	11.2	13.1	13.1	19	21.3
13			8.3	10.4	12.4	12.4	18	20.6
14			7.4	9.7	11.9	11.9	17.2	20
15					11.5	11.5	16.6	19.1
16							15.8	18
17							15	17.5
18							14.1	16.9
19							13.5	16.1
20							12.9	15.2
21								14.7
22								13.2

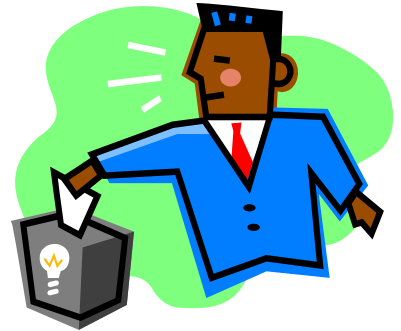
Model Descriptions

- ECP—Econopower Air Curtain
- MP—Minipower
- CED—Customer Entrance Door
- CHS—Heated Customer Entrance with Hot Water or Steam
- CHD—Chameleon Concealed Door
- BCE—Bug Control Door Light Duty
- BCT—Bug Control Door Heavy Duty
- ETD—Climate Control Door
- LDC—Light Duty Corrosion Resistant
- LDX—Light Duty Explosion Proof
- THS—Climate Control with Hot Water or Steam
- TIG—Climate Control with Indirect Gas Heat
- TDG—Climate Control with Direct Gas Heat
- TSD—Industrial Door
- HDC—Heavy Duty Corrosion Resistant
- HDX—Heavy Duty Explosion Proof

Call us at Elite Air Systems for assistance in selecting the correct model for your application.

Application Suggestion !

Use an air curtain to replace cabinet heaters in your vestibules. Powered Aire can provide you with a control scheme that will allow the curtain to operate on low speed when there is a call for heat from a wall thermostat or high speed when there is a call from the door switch. Cabinet heaters alone are inefficient. Every time the door opens, the vestibule loses all the heated air. An air curtain used with this unique control scheme can keep your vestibule warm and reduce the amount of heat lost while the doors are open by 70-80%.



<input type="checkbox"/> Do not want to receive any more newsletters	<input type="checkbox"/> I would like to receive literature / software about: <hr/> <hr/> <hr/>	Name _____ Company _____ Phone _____ Fax _____ E-mail _____
<p style="font-weight: bold; font-size: 1.2em;">Complete form and fax to (215) 354-9072</p>		